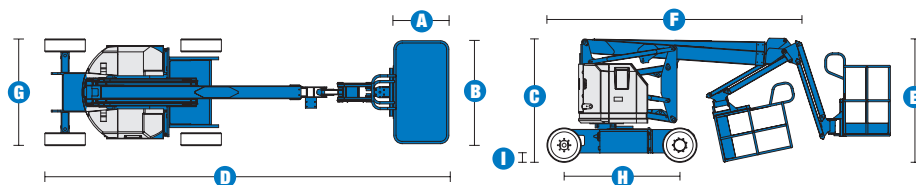
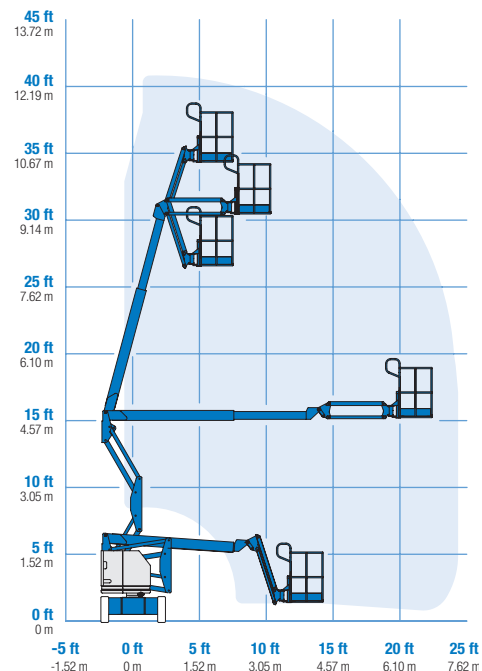


Specifications



RANGE OF MOTION Z™-34/22N



MODEL		Z™-34/22N	
MEASUREMENTS	US	Metric	
Working height maximum*	40 ft 6 in	12.52 m	
Platform height maximum	34 ft 6 in	10.52 m	
Horizontal reach maximum	22 ft 3 in	6.78 m	
Up and over clearance - at platform	15 ft 3 in	4.65 m	
at jib	15 ft 2 in	4.62 m	
A Platform length	2 ft 6 in	.76 m	
B Platform width	4 ft 8 in	1.42 m	
C Height - stowed	6 ft 7 in	2.00 m	
D Length - stowed	18 ft 9 in	5.72 m	
E Storage height	7 ft 5 in	2.26 m	
F Storage length	13 ft 9 in	4.19 m	
G Width	4 ft 10 in	1.47 m	
H Wheelbase	6 ft 2 in	1.88 m	
I Ground clearance - center	5.5 in	.14 m	

PRODUCTIVITY		
Lift capacity	500 lbs	227 kg
Platform rotation	180°	
Vertical jib rotation	139°	
Turntable rotation	355° non-continuous	
Turntable tailswing	zero	
Drive speed - stowed	4.0 mph	6.4 km/h
Drive speed - raised**	0.68 mph	1.1 km/h
Gradeability - stowed***	35%	
Turning radius - inside	7 ft	2.13 m
Turning radius - outside	13 ft 5 in	4.08 m
Controls	24V DC proportional	
Tires (solid rubber, non-marking, treaded)	22 x 7 x 17.75 in	.56 x .18 x .45 m

POWER		
Power source	48V DC (eight 6 V batteries 315 Ah capacity)	
Auxiliary power unit	24V DC	
Hydraulic tank capacity	4 gal	15.1 L

WEIGHT****		
	11,400 lbs	5,171 kg

STANDARDS COMPLIANCE ANSI A92.5, CSA B354.4, CE Compliance, AS 1418.10

* The metric equivalent of working height adds 2 m to platform height. U.S. adds 6 ft to platform height.
 ** In lift mode (platform raised), the machine is designed to operate on firm, level surfaces only.
 *** Gradeability applies to driving on slopes. See operator's manual for details regarding slope ratings.
 **** Weight will vary depending on options and/or country standards.

Features

EASILY CONFIGURED TO MEET YOUR NEEDS

PLATFORM OPTIONS

- Steel 4 ft 8 in (1.42 m) (standard)
- Steel 3 ft 10 in (1.17 m)

JIB

- 4 ft (1.22 m) jib boom

POWER

- 48V DC power source

DRIVE

- 2WD

TIRE

- Solid rubber non-marking

STANDARD FEATURES

MEASUREMENTS

- 40 ft 6 in (12.52 m) working height
- 22 ft 3 in (6.78 m) horizontal reach
- 15 ft 2 in (4.62 m) up and over clearance
- Up to 500 lbs (227 kg) lift capacity

PRODUCTIVITY

- 4 ft (1.22 m) jib boom with 139° working range
- Self-leveling platform
- Hydraulic platform rotation
- Fully proportional controls
- Thumb rocker steer
- Drive enable
- AC power cord to platform
- Horn
- Hour meter
- Tilt alarm
- 355° non-continuous turntable rotation
- Zero tailswing
- Sep-Ex drive system

POWER

- 48V deep cycle battery pack
- 24V DC auxiliary power
- 25 Amp 48 V battery charger



OPTIONS & ACCESSORIES

PRODUCTIVITY

- Platform swing gate
- Half-mesh platform inserts with swing gate
- Air line to platform
- Deluxe aircraft protection package
- Fire resistant hydraulic oil
- Biodegradable hydraulic oil
- Tool tray
- Fluorescent tube caddy
- Pipe cradle (pair)
- Alarm package
- Platform work lights
- Lockable platform control box covers

POWER

- EE UL583 Fire Protection rating
- Battery charge indicator (BCI)
- Low voltage interrupt with BCI
- 800 watts inverter
- Retained key selector switch

Genie United States

18340 NE 76th Street
P.O. Box 97030
Redmond, Washington 98073-9730

Telephone **+1 (425) 881-1800**
Toll Free in USA/Canada **+1 (800) 536-1800**
Fax +1 (425) 883-3475

Genie Europe

Millennium House
Brunel Drive
Newark NG24 2DE
UK

Telephone **+44 (0)1476 584333**
Fax +44 (0)1476 584334

Email: infoeurope@genieind.com

Distributed By:

Effective Date: January, 2008. Product specifications and prices are subject to change without notice or obligation. The photographs and/or drawings in this document are for illustrative purposes only. Refer to the appropriate Operator's Manual for instructions on the proper use of this equipment. Failure to follow the appropriate Operator's Manual when using our equipment or to otherwise act irresponsibly may result in serious injury or death. The only warranty applicable to our equipment is the standard written warranty applicable to the particular product and sale and we make no other warranty, express or implied. Products and services listed may be trademarks, service marks or trade-names of Terex Corporation, Genie Industries, Inc. and/or their subsidiaries in the U.S.A. and many other countries and all rights are reserved. Terex® is a Registered Trademark of Terex Corporation in the U.S.A. and many other countries. Genie® is a Registered Trademark of Genie Industries, Inc. in the U.S.A. and many other countries. Genie is a Terex Company. © 2008 Terex Corporation.